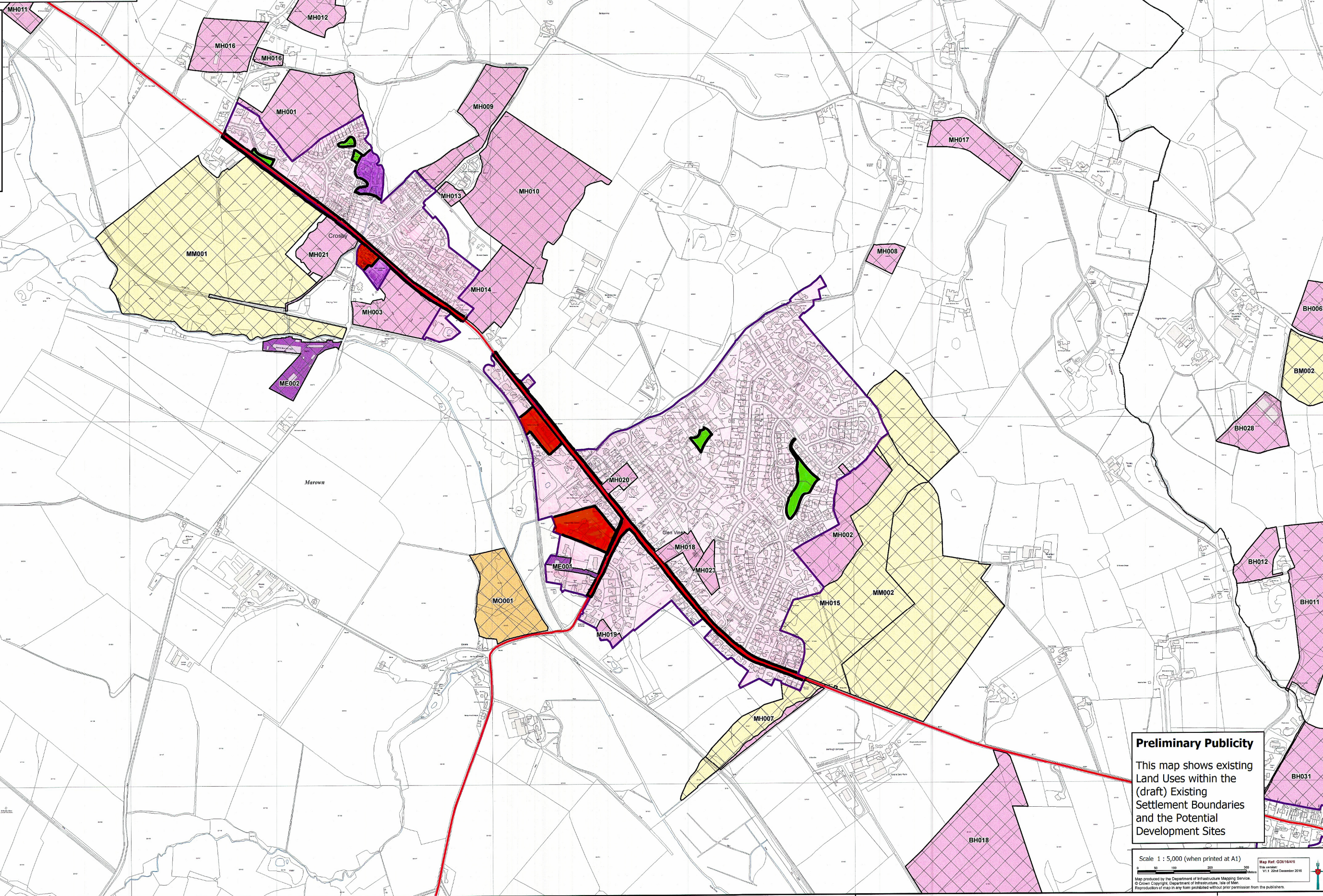




Cabinet Office

AREA PLAN FOR THE EAST Working Map 7 CROSBY and GLEN VINE

- Key**
- Existing Settlement Boundaries
 - Local Authority Boundaries
 - Existing Land Uses**
 - Main Road
 - River
 - Employment Area
 - Predominantly Residential
 - LDHP Low Density Housing in Parkland
 - Open Space (Public or Private)
 - Mixed Use
 - Other Uses (e.g. Community Facility or Leisure)
 - Potential Development Sites**
 - Employment
 - Housing
 - Mixed Use
 - Other



Preliminary Publicity

This map shows existing Land Uses within the (draft) Existing Settlement Boundaries and the Potential Development Sites

Scale 1 : 5,000 (when printed at A1)

Map produced by the Department of Infrastructure Mapping Service
© Crown Copyright, Department of Infrastructure, Isle of Man
Reproduction of map in any form prohibited without prior permission from the publishers.

Map Ref: ID016/16/11
This version: V1.1 22nd December 2016